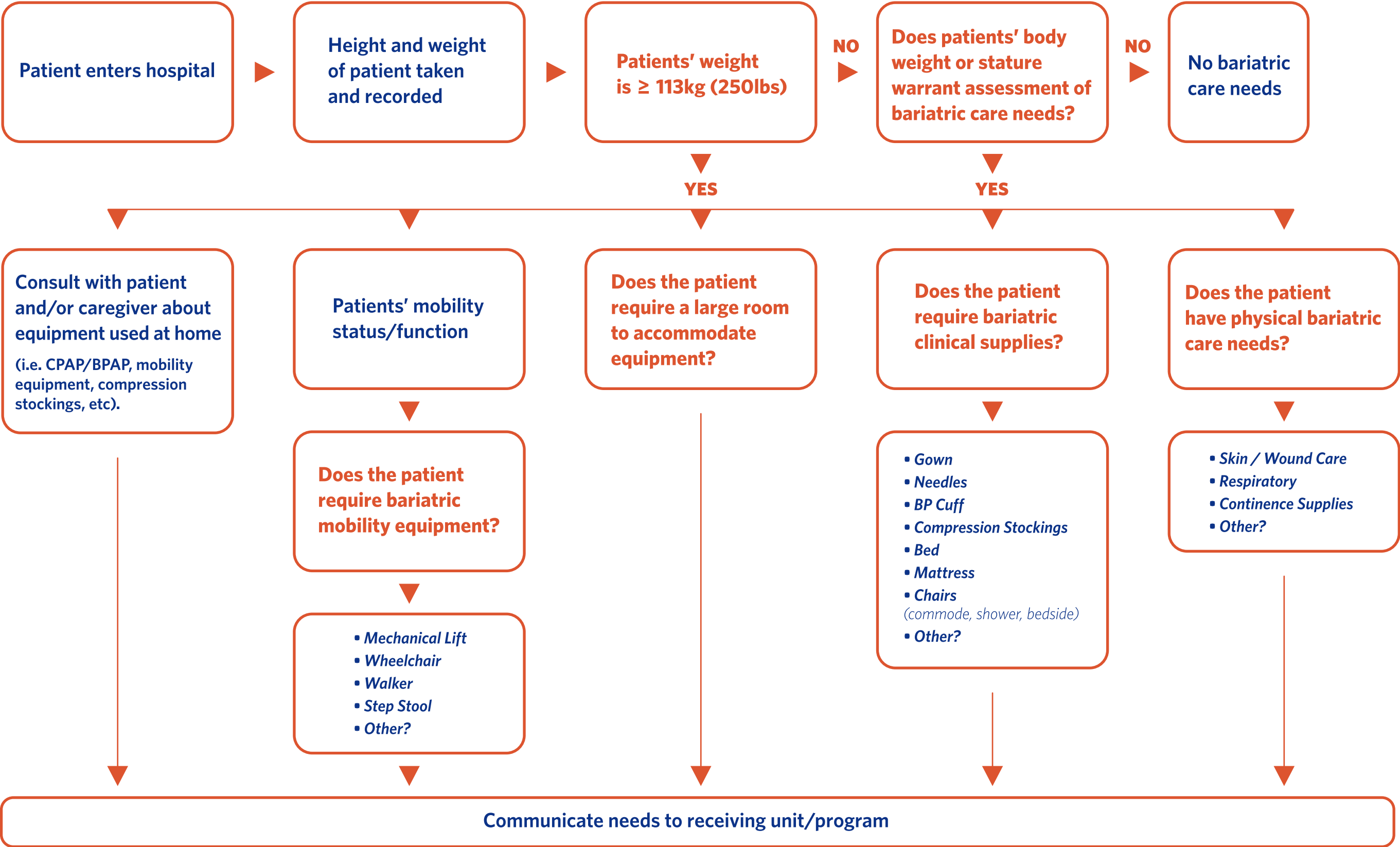


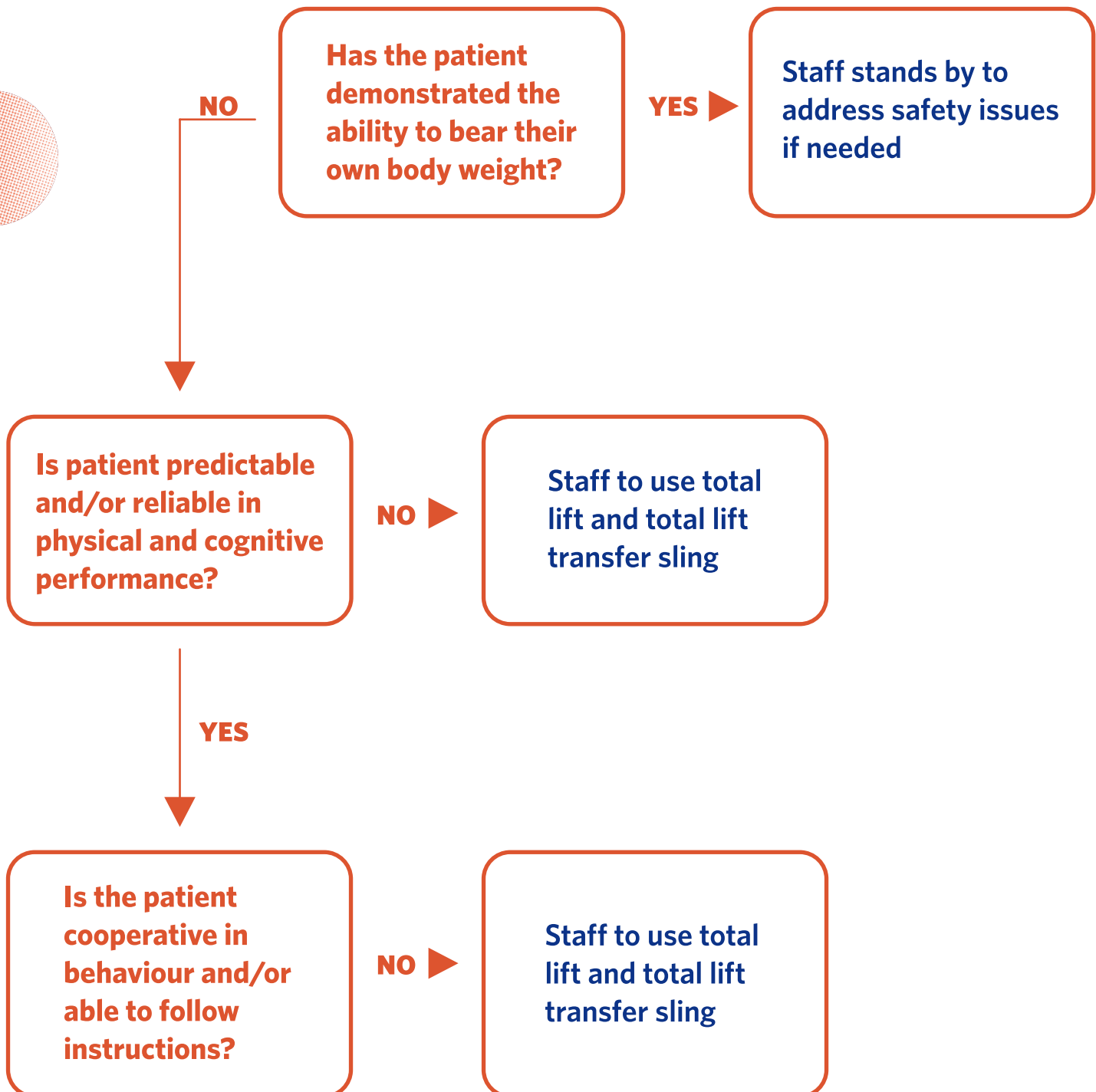
Bariatric Care Needs Assessment Algorithm

Bariatric Care Needs (BCN):

BCN will be assessed for all patients with a body weight of 113kg (250lbs) or more. Not all of these patients will have bariatric care needs. As well, some patients who weigh less than 113kg (250lbs) may have a stature or body shape that may require assessment for BCN. Needs assessment will include supplies, mobility, equipment, and other care requirements.



Algorithm for patient transfer to and from: *bed-to-chair; chair-to-toilet; chair-to-chair*



Algorithm for toilet transfers

